

rubber house



Rubber House

One of the essential thoughts in this projekt is the understanding that simplicity in the sense of simple living is not something suppressing or constricting, but rather when performed as a voluntary act enables one to experience life aside from status driven life styles. Simplicity negotiates the imitation of precasted and unachievable images. Simplicity demands a certain degree of frugality, though simplicity is not meant ascetic, but it is a way to increase the quality of life. Simplicity does not deny luxury, but even can evoke a different rich kind of luxury. This luxury can only be produced through impartiality towards the things. Simplicity means seeing potentials and transforming meaning.

Material use and construction:

The project for the rubber house focuses on cheap and simple manners of construction, taking into account new qualities of found objects. The basic idea of the material use is the revaluation of 2nd hand materials which can be provided for free (excluding transportation) as well as the use of wood products as sustainable renewable primary products.

Foundation

The house is punctually founded on a pile foundation on concrete slabs in a bed of sand within a grid of 3 X 3 metres. The punctual foundation takes into account the marshy, wet ground of the site as well as it enables the simple deconstruction of the foundation.

Walls, floor, ceiling

Walls, floors and ceilings are erected as prefabricated, insulated timber frame construction elements.

Openings

The use of 2nd hand material like used windows requires a structural system of the house which is flexible enough to take on different measurements of the windows.

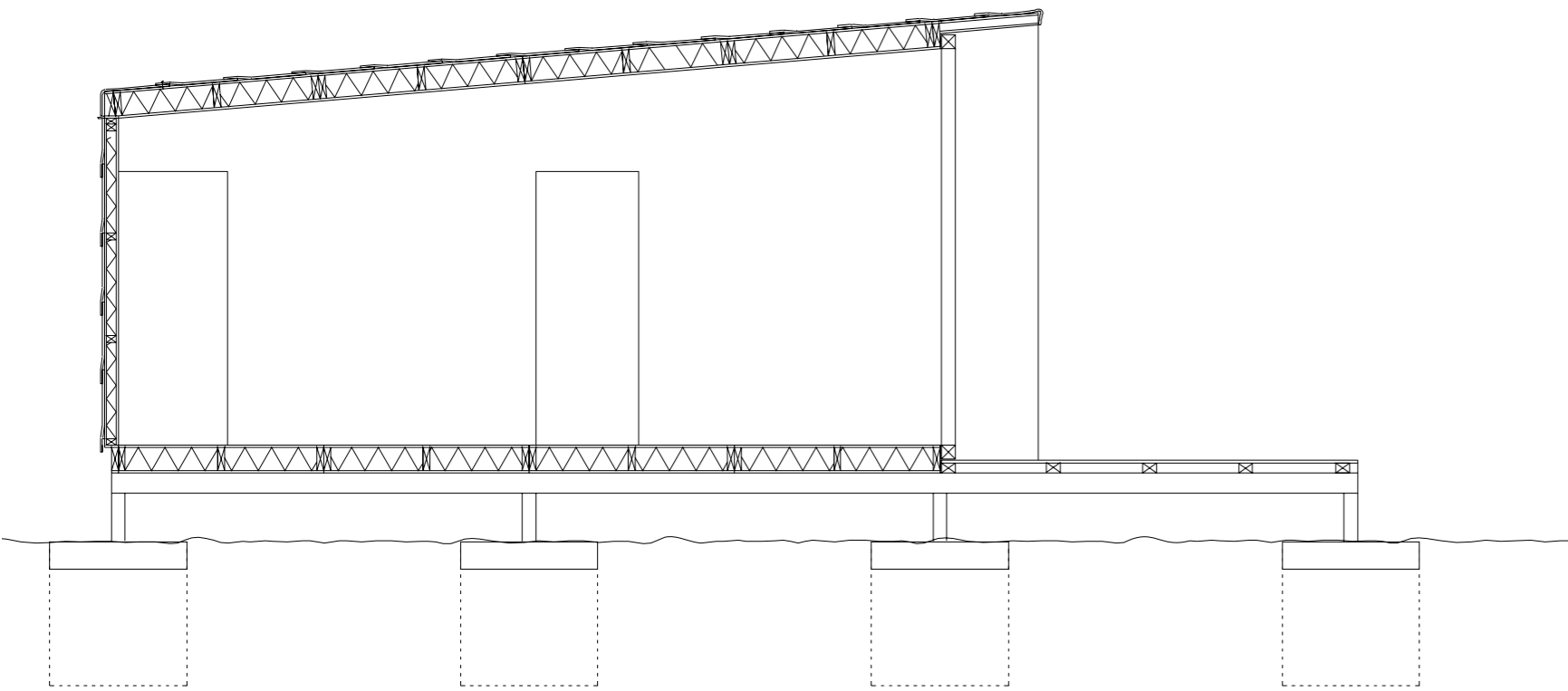
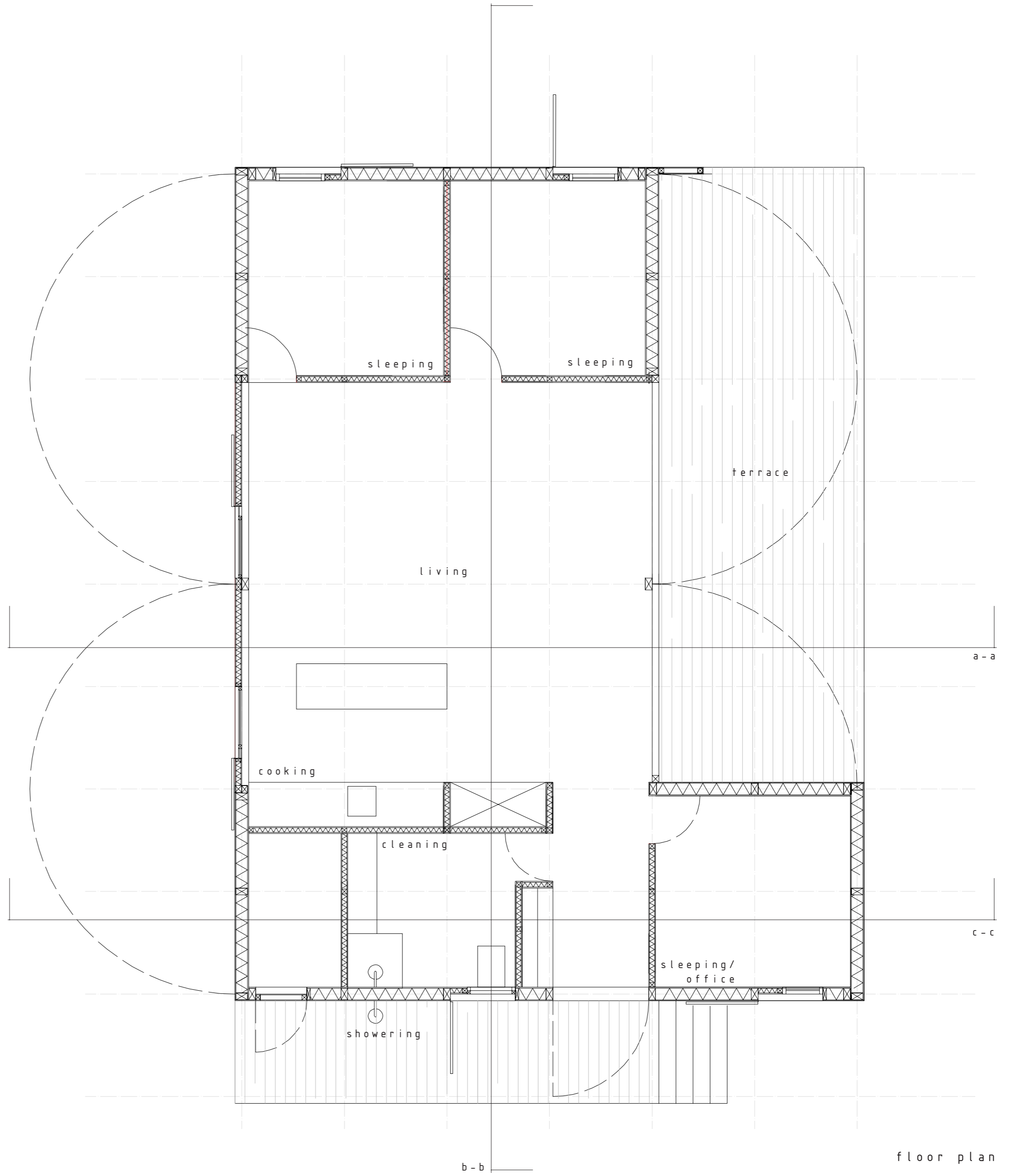
Opening sizes for windows

are dimensioned in a standard size of 1 X 1 metre in which windows with smaller measurements can be fitted in. the remaining open faces will be filled with insulated wooden plankings. The windows will be fixed, opening for fresh air is provided by the openable wooden elements.

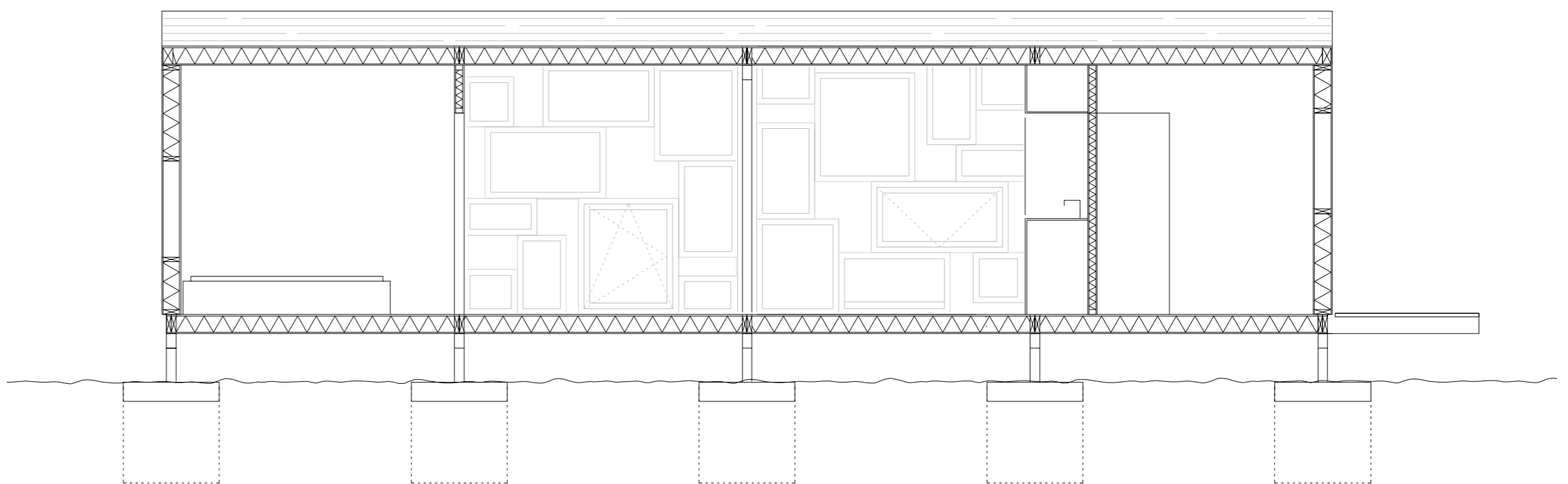
The glass walls are constructed as wooden frames in which used windows in different sizes can be fitted in. The remaining open faces will be filled with insulated wooden plankings.

Skin

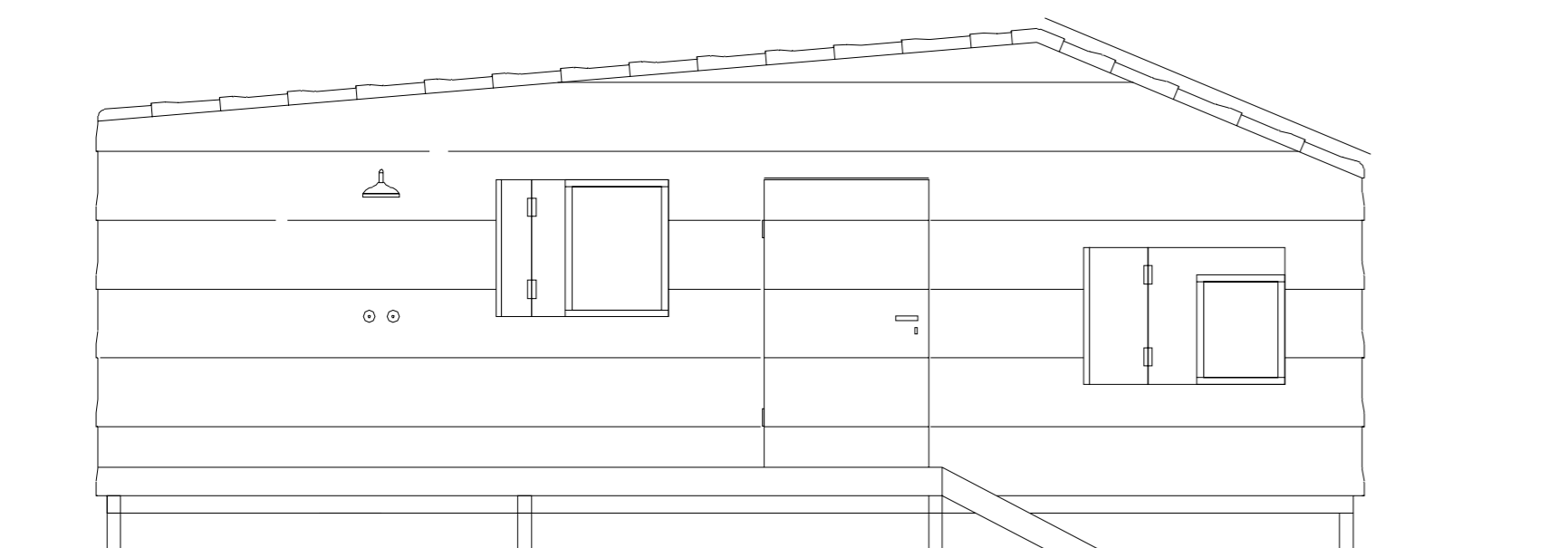
The house is wrapped with used rubber conveyor belts, screwed to the wooden walls, arranged scaled, serving as weather skin.



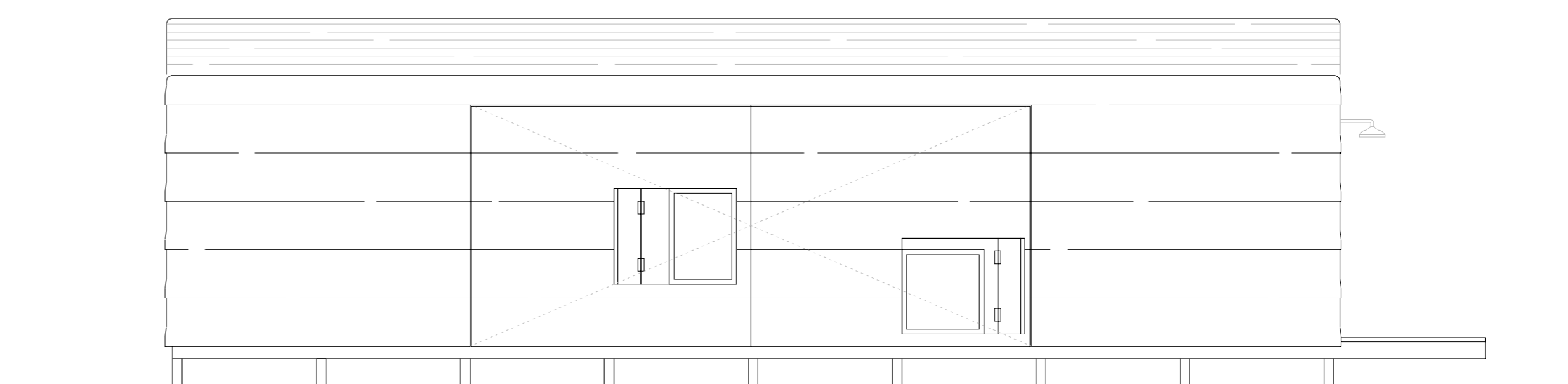
section a-a



section b-b

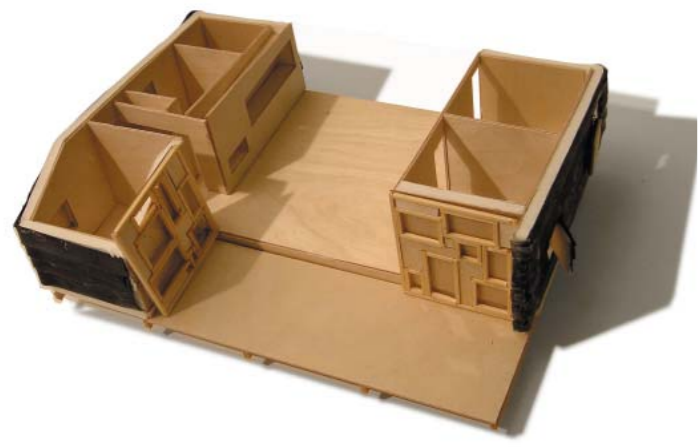
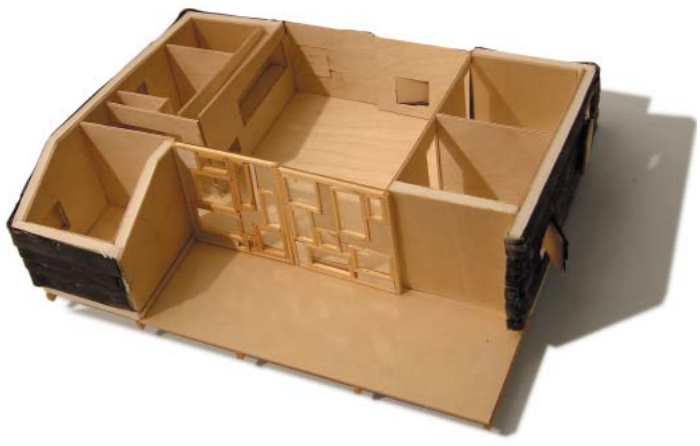


elevation north



elevation east

rubber house



degrees of openness



prefab timber frame walls, floors and ceilings

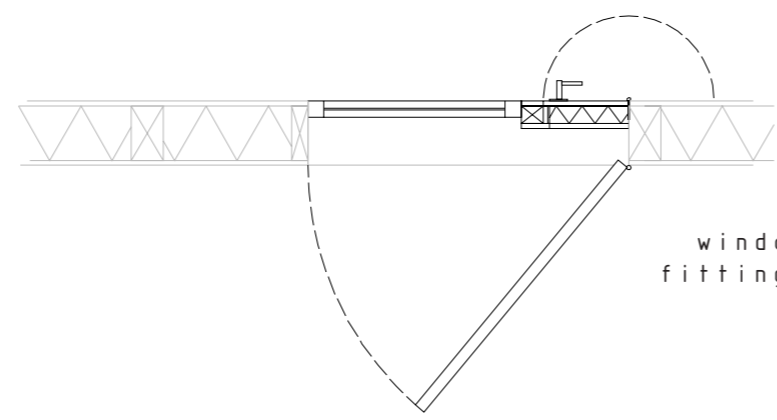
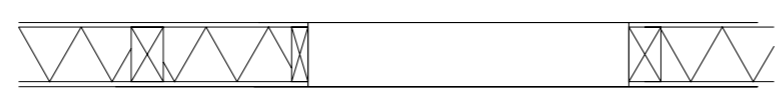


discarded rubber conveyor belts

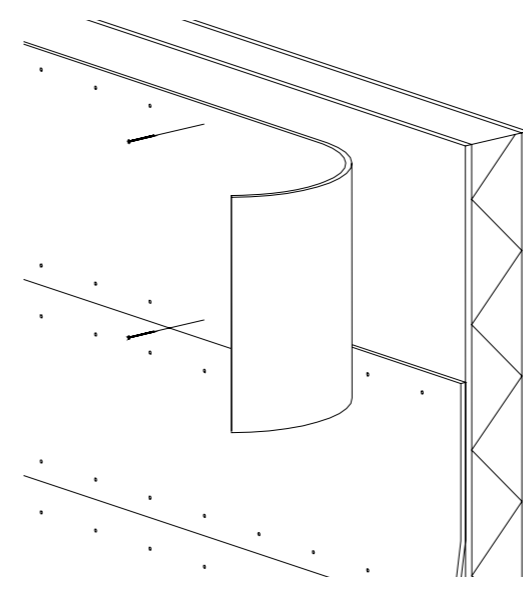


revaluated windows

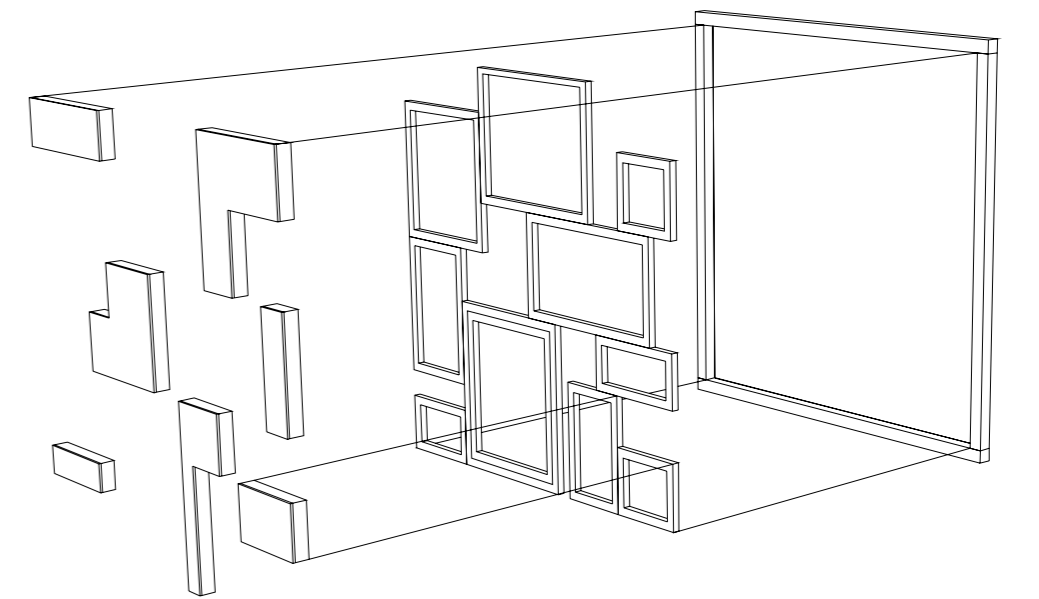
use of renewable primary products and 2nd hand materials



window fittings

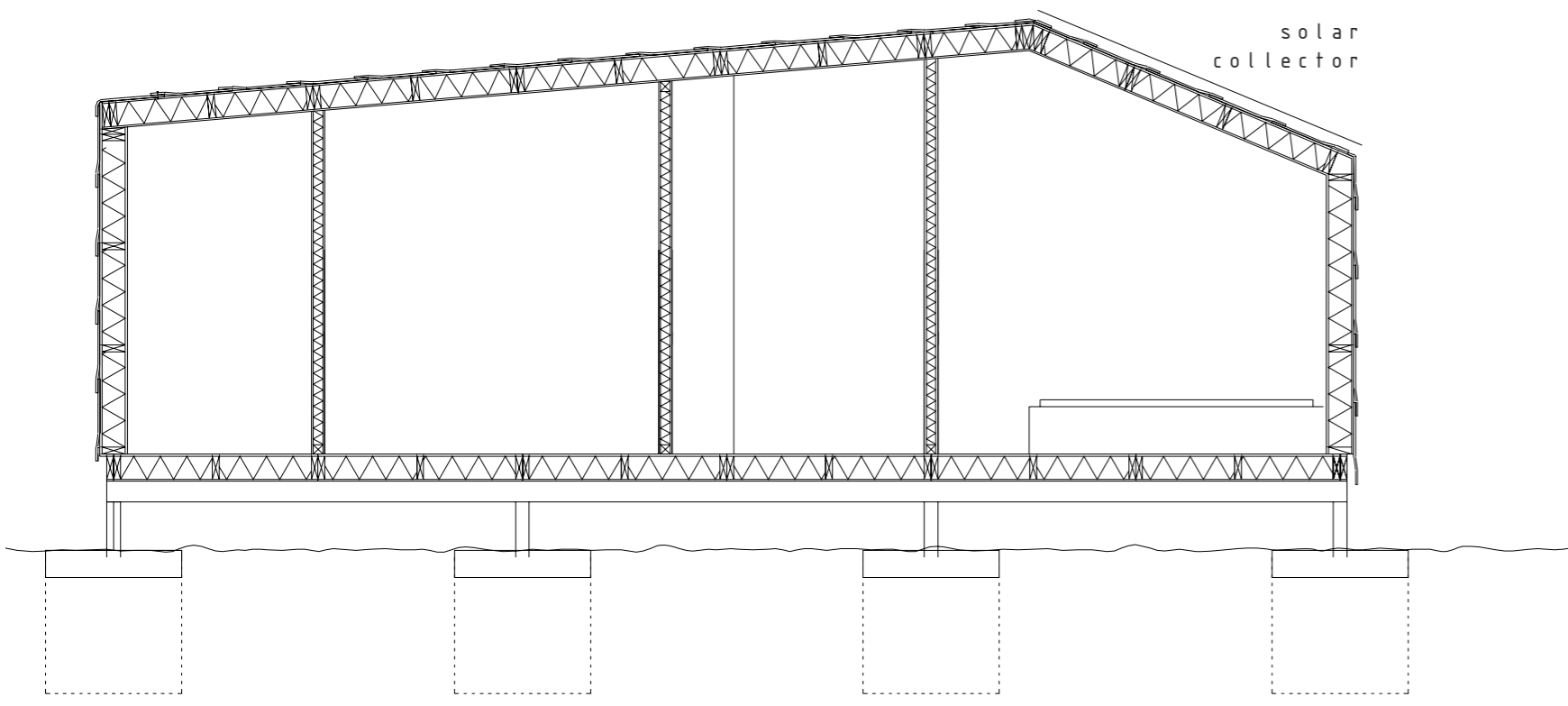


scaled rubber skin



big swinging doors

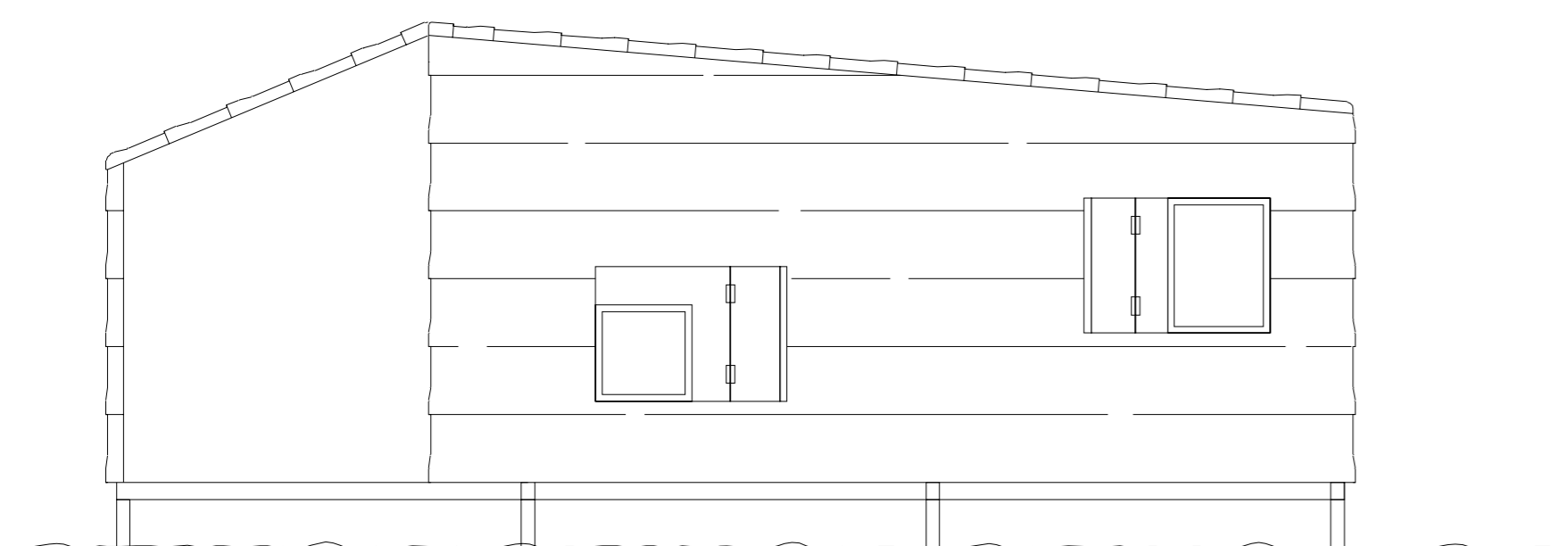
construction principles



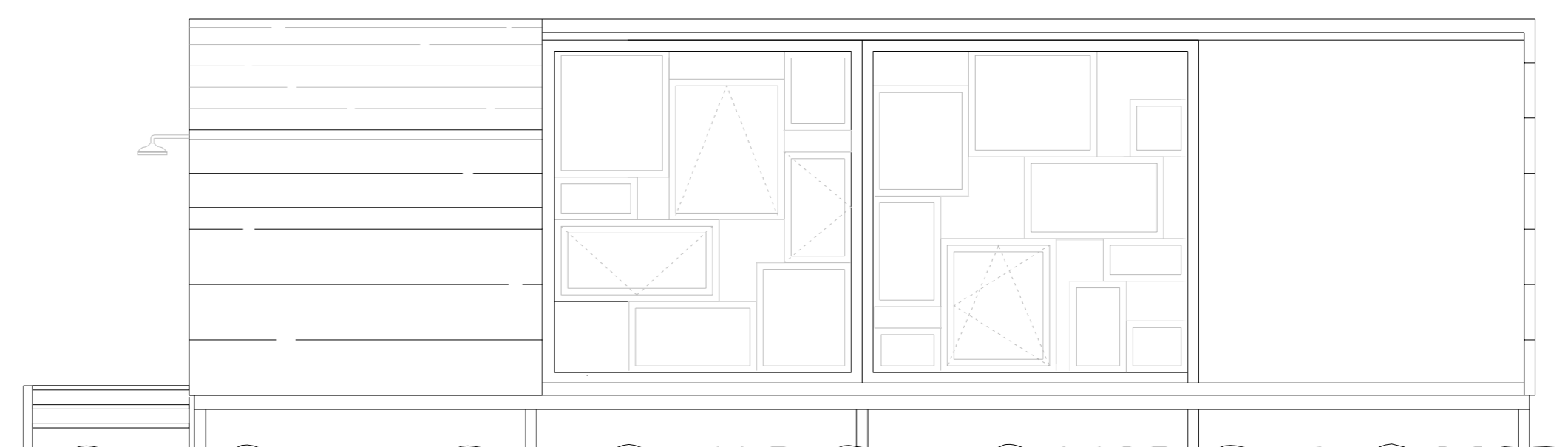
section c-c



overall view



elevation south



elevation east